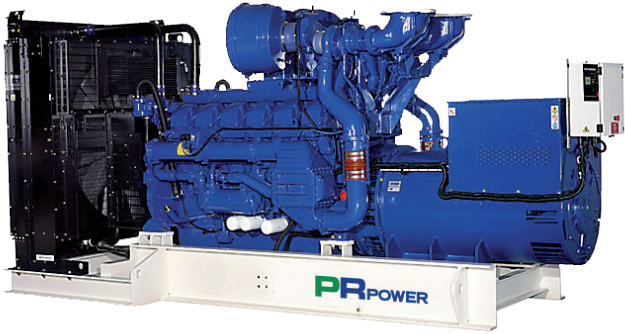


# PR1375P

## PR Power Diesel Generator Specifications



Generator image used for illustration purposes only

PR Power's range of diesel generators have been designed and manufactured to meet Australian and European standards and are available for sale Australia wide.

The PR1375P is a three phase, robust, open set generator ideally suited for mining, construction and rental applications. Additional accessories or modifications, including parallel and synchronising functions, are also available on request.

In addition to the PR range of generators, PR Power also have available mobile lighting towers and water solution equipment Australia wide.

For more information on our range of generators and other equipment contact our office today on 1300 399 499 or visit our website at [www.prpower.com](http://www.prpower.com).

### KEY FEATURES

- 4x 12v set mounted battery, with lockable isolator
- 8hr run, bunded base fuel tank to contain all fluid spills (Comply to AS1940-2004 and EPA 2012 standards)
- Emergency stop button located on either side of the unit
- Corner fittings to to ISO1161. Four point lifting
- Fork lift pockets
- Engine/alternator resiliently mounted on steel base frame

### TECHNICAL DATA

#### GENERATOR SPECIFICATIONS

Type	Synchronous
Three phase (Prime) power	1250kVA/1000kW
Voltage/Frequency	415V/50Hz
Amps	1739A
Insulation Class	H
Protection	IP23
Alternator Brand	Brushless Leroy Somer
Alternator Model	LSA50.2M6

#### ENGINE SPECIFICATIONS

Engine type	Perkins 4012-46TWG2A
Cylinders	12 inline
Displacement	45.48L
Engine speed	1500rpm
Intake System	Turbocharged
Cooling system	50°C
Coolant Capacity	201L
Oil Capacity	177L
Fuel type	Diesel

#### GENERAL SPECIFICATIONS

Fuel tank capacity	2000L
Controller	Deep Sea 7420
Auto Engine Protection Shutdown (Deep Sea Control Panel)	<ul style="list-style-type: none"><li>RS485 output</li><li>Auto remote</li><li>Manual Start</li><li>Robust digital display package</li><li>Easy menu navigation</li><li>Advanced protection technology</li></ul>

#### Generator Dimensions

Dimensions (LxWxH)	4680 x 1800 x 2385mm
Dry Weight	9,407kg

**Standby Rating:** These ratings are applicable for supplying continuous electrical power (at variable load) in the event of a utility power failure. No overload is permitted on these ratings. The alternator on this model is peak continuous rated (as defined in ISO 8528-3).

**Prime Rating:** These ratings are applicable for supplying continuous electrical power (at variable load) in lieu of commercially purchased power. There is no limitation to the annual hours of operation and this model can supply 10% overload power for 1 hour in 12 hours.

**Standard Reference Conditions:** Standard reference conditions 25°C (77°F) air inlet temp, 100m (328ft) A.S.L 30% relative humidity. Fuel consumption data at full load with diesel fuel with specific gravity of 0.85 and conforming to BS2869: 1998, Class A2.

**Note:** kVA ratings subject to ambient temperature/altitude/site conditions. Engine kW rating may vary +/- 3%.

t. 1300 399 499

e. [sales@prpower.com](mailto:sales@prpower.com) | w. [www.prpower.com](http://www.prpower.com)

**PRPOWER**  
Performance and Reliability