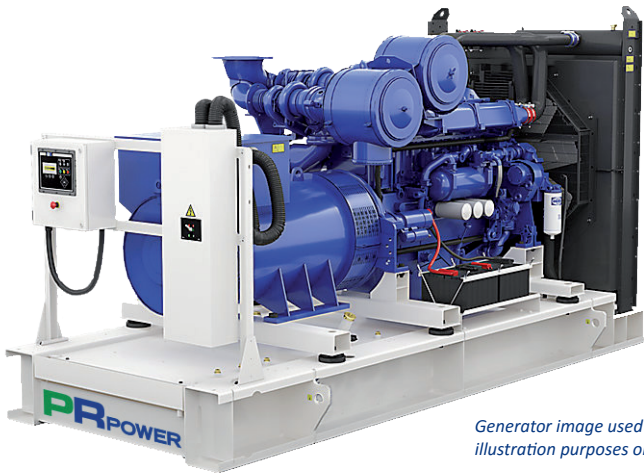


PR800P

PR Power Diesel Generator Specifications



Generator image used for illustration purposes only

PR Power's range of diesel generators have been designed and manufactured to meet Australian and European standards and are available for sale Australia wide.

The PR800P is a three phase, robust, open set generator ideally suited for mining, construction and rental applications. Additional accessories or modifications, including parallel and synchronising functions, are also available on request.

In addition to the PR range of generators, PR Power also have available mobile lighting towers and water solution equipment Australia wide.

For more information on our range of generators and other equipment contact our office today on 1300 399 499 or visit our website at www.prpower.com.

KEY FEATURES

- 2 x12v set mounted battery, with lockable isolator
- 8hr run, bunded base fuel tank to contain all fluid spills (Comply to AS1940-2004 and EPA 2012 standards)
- Emergency stop button located on either side of the unit
- Power cable exit via a non-ferous gland plate in the container wall
- Corner fittings to to ISO1161. Four point lifting
- Fork lift pockets
- Engine/alternator resiliently mounted on steel base frame

TECHNICAL DATA

GENERATOR SPECIFICATIONS

Type	Synchronous
Three phase (Prime) power	725kVA/580kW
Voltage/Frequency	415V/50Hz
Amps	1009A
Insulation Class	H
Protection	IP23
Alternator Brand	Brushless Leroy Somer
Alternator Model	LSA49.1M6

ENGINE SPECIFICATIONS

Engine type	Perkins 4006-23TAG2	
Cylinders	6	
Displacement	22.92L	
Engine speed	1500rpm	
Intake System	Turbocharged	
Cooling system	50°C	
Coolant Capacity	105L	
Oil Capacity	113L	
Governor	Electric	
Fuel type	Diesel	
Starting system	24v electric	
Fuel Consumption	100%	50%
	172L/h	90L/h

GENERAL SPECIFICATIONS

Fuel tank capacity	1150L
Controller	Deep Sea 7420
Auto Engine Protection Shutdown (Deep Sea Control Panel)	<ul style="list-style-type: none"> ▪ RS485 output ▪ Auto remote ▪ Manual Start ▪ Robust digital display package ▪ Easy menu navigation ▪ Advanced protection technology

Generator Dimensions

Dimensions (LxWxH)	3810 x 1710 x 2260mm
Dry Weight	6,444kg

Standby Rating: These ratings are applicable for supplying continuous electrical power (at variable load) in the event of a utility power failure. No overload is permitted on these ratings. The alternator on this model is peak continuous rated (as defined in ISO 8528-3).

Prime Rating: These ratings are applicable for supplying continuous electrical power (at variable load) in lieu of commercially purchased power. There is no limitation to the annual hours of operation and this model can supply 10% overload power for 1 hour in 12 hours.

Standard Reference Conditions: Standard reference conditions 25°C (77°F) air inlet temp, 100m (328ft) A.S.L 30% relative humidity. Fuel consumption data at full load with diesel fuel with specific gravity of 0.85 and conforming to BS2869: 1998, Class A2.

Note: KVA ratings subject to ambient temperature/altitude/site conditions. Engine kW rating may vary +/- 3%.

t. 1300 399 499

e. sales@prpower.com | w. www.prpower.com

PRPOWER
Performance and Reliability