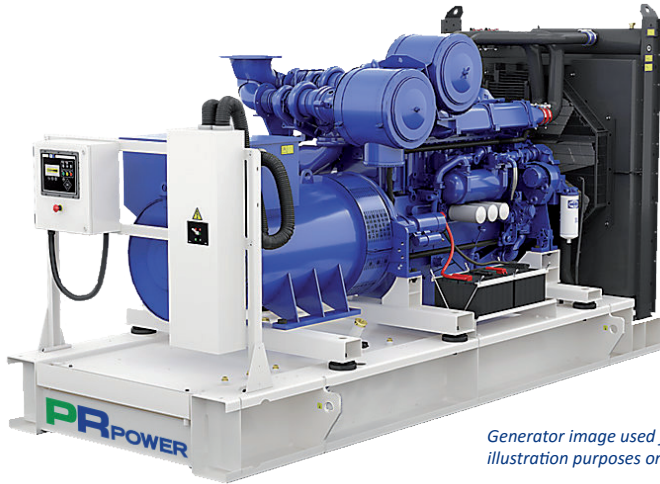


PR880P

PR Power Diesel Generator Specifications



Generator image used for illustration purposes only

PR Power's range of diesel generators have been designed and manufactured to meet Australian and European standards and are available for sale Australia wide.

The PR880P Open set is a three phase, robust generator ideally suited for mining, construction and rental applications. Additional accessories or modifications, including parallel and synchronising functions, are also available on request.

In addition to the PR range of generators, PR Power also have available mobile lighting towers and water solution equipment Australia wide.

For more information on our range of generators and other equipment contact our office today on 1300 399 499 or visit our website at www.prpower.com.

KEY FEATURES

- 2x 12v set mounted battery, with lockable isolator
- 8hr run, bunded base fuel tank to contain all fluid spills (Comply to AS1940-2004 and EPA 2012 standards)
- Emergency stop button located on either side of the unit
- Corner fittings to to ISO1161. Four point lifting
- Fork lift pockets
- Engine/alternator resiliently mounted on steel base frame

TECHNICAL DATA

GENERATOR SPECIFICATIONS		
Type	Synchronous	
Three phase (Prime) power	800kVA/640kW	
Voltage/Frequency	415V/50Hz	
Amps	1113A	
Insulation Class	H	
Protection	IP23	
Alternator Brand	Brushless Leroy Somer	
Alternator Model	LSA49.1M75	
ENGINE SPECIFICATIONS		
Engine type	Perkins 4006-23TAG3A	
Cylinders	6	
Displacement	22.92L	
Engine speed	1500rpm	
Intake System	Turbocharged	
Cooling system	50°C	
Coolant Capacity	160L	
Oil Capacity	123L	
Governor	Electric	
Fuel type	Diesel	
Starting system	24V electric	
Fuel Consumption	100%	50%
	163 L/h	109 L/h
GENERAL SPECIFICATIONS		
Fuel tank capacity	900L	
Controller	Deep Sea 8610	
Auto Engine Protection Shutdown (Deep Sea Control Panel)	<ul style="list-style-type: none"> ▪ RS485 output ▪ Auto remote ▪ Manual Start ▪ Robust digital display package ▪ Easy menu navigation ▪ Advanced protection technology 	
Generator Dimensions		
Dimensions (LxWxH)	3810 x 1710 x 2260mm	
Dry Weight	6,444kg	

Standby Rating: These ratings are applicable for supplying continuous electrical power (at variable load) in the event of a utility power failure. No overload is permitted on these ratings. The alternator on this model is peak continuous rated (as defined in ISO 8528-3).

Prime Rating: These ratings are applicable for supplying continuous electrical power (at variable load) in lieu of commercially purchased power. There is no limitation to the annual hours of operation and this model can supply 10% overload power for 1 hour in 12 hours.

Standard Reference Conditions: Standard reference conditions 25°C (77°F) air inlet temp, 100m (328ft) A.S.L 30% relative humidity. Fuel consumption data at full load with diesel fuel with specific gravity of 0.85 and conforming to BS2869: 1998, Class A2.

Note: kVA ratings subject to ambient temperature/altitude/site conditions. Engine kW rating may vary +/- 3%.

t. 1300 399 499

e. sales@prpower.com | w. www.prpower.com

PRPOWER
Performance and Reliability